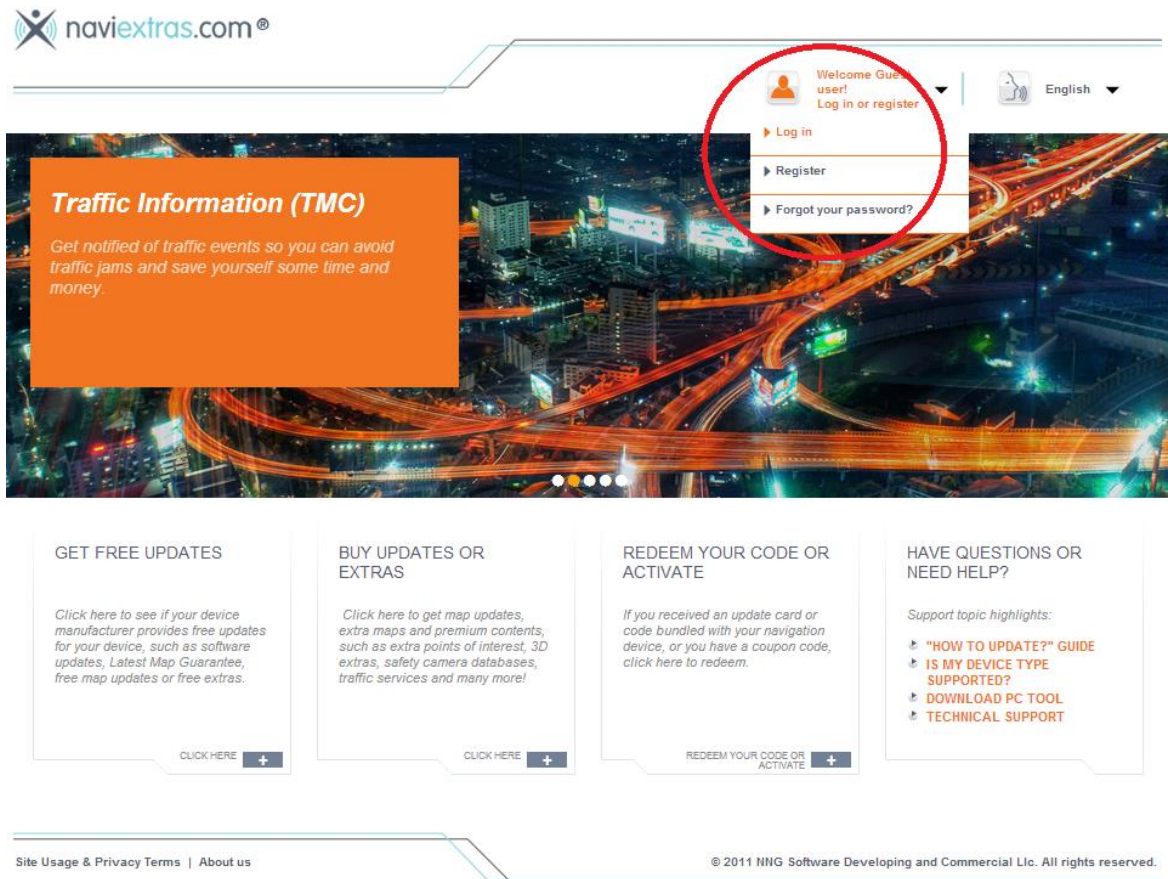


# Upgrading Maps for the first time

- Go to [www.naviextras.com](http://www.naviextras.com)
- Log in or register



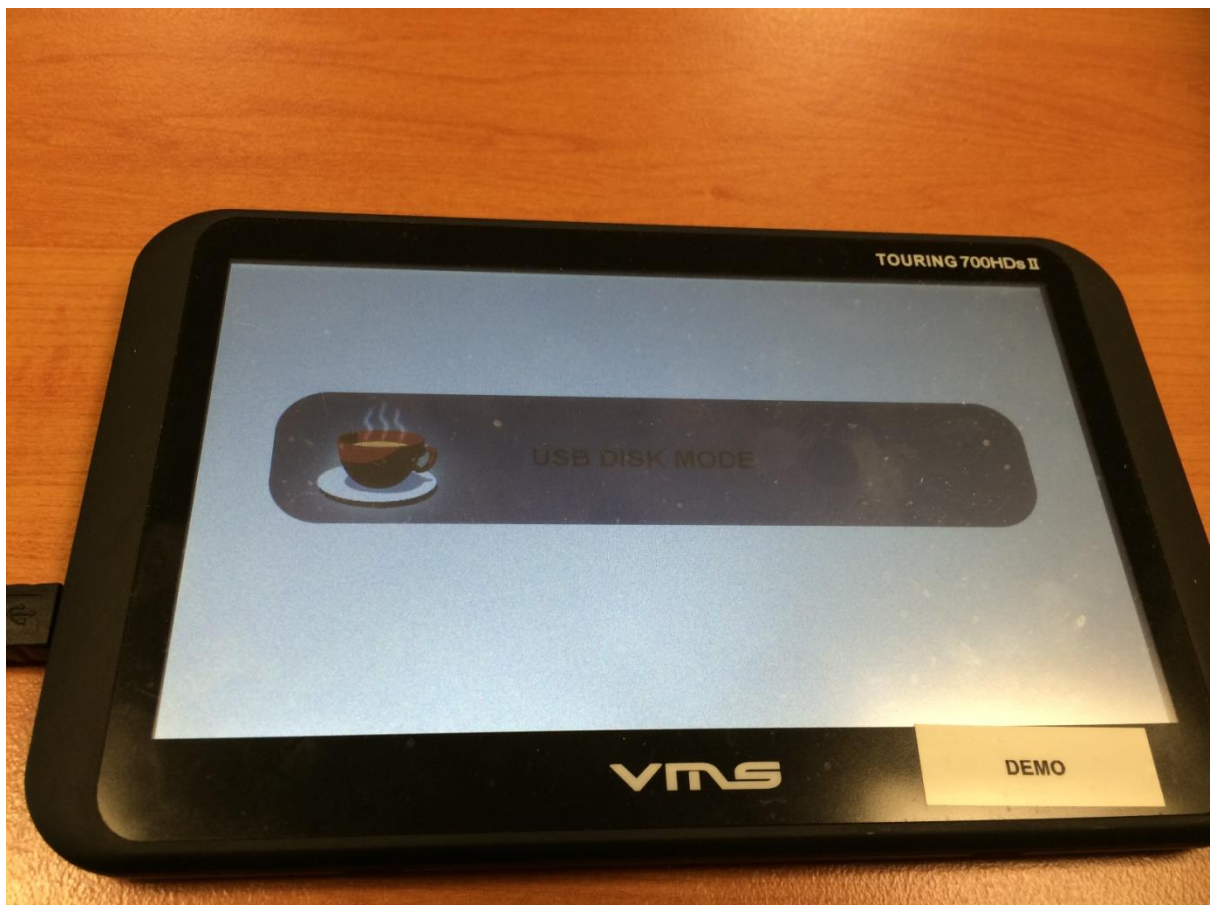
- Plug Portable unit using the USB cable (if in dash unit plug USB Micro SD card reader in)



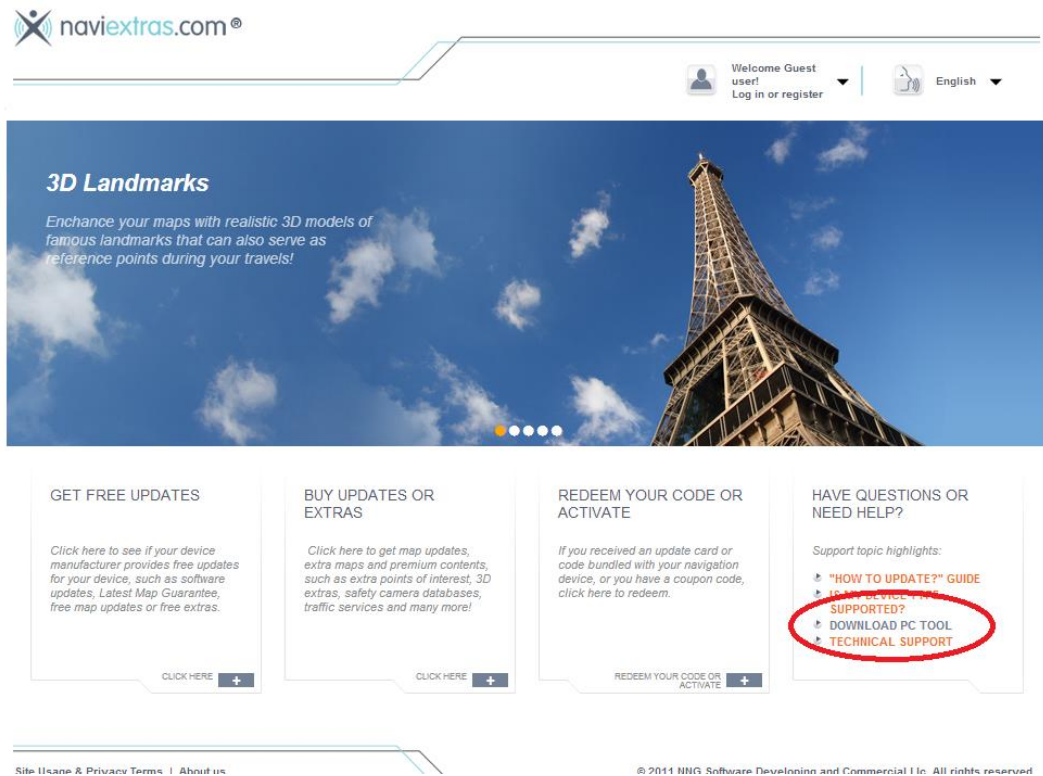
- Press the computer icon not the battery icon



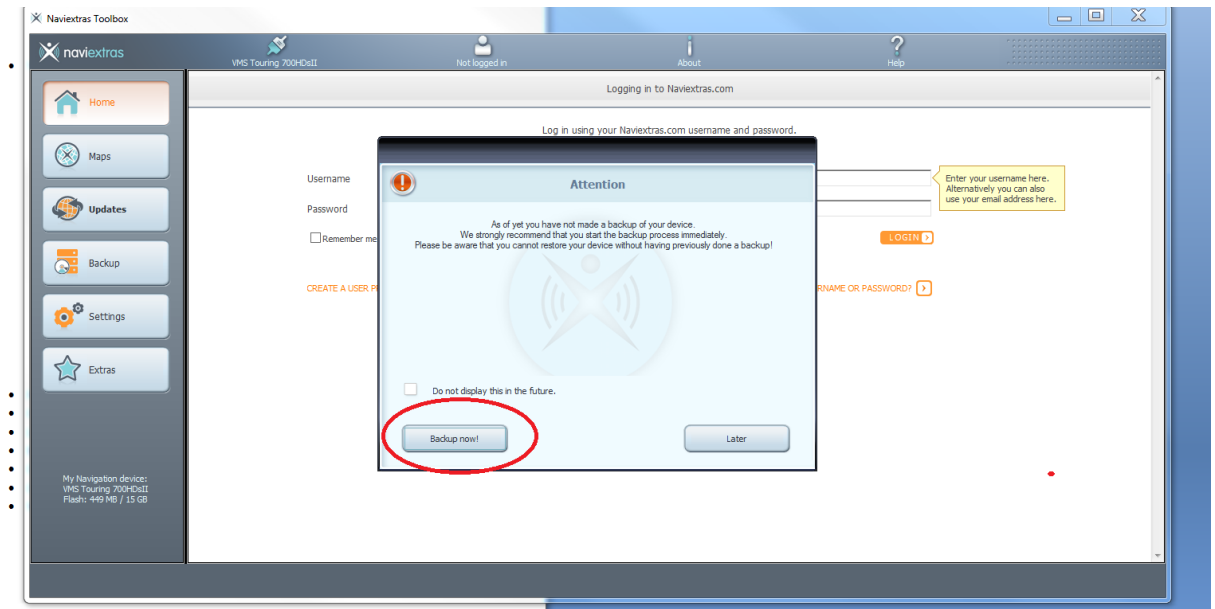
- Ensure there is a message on device saying USB disk mode, if this does not appear unplug and try again



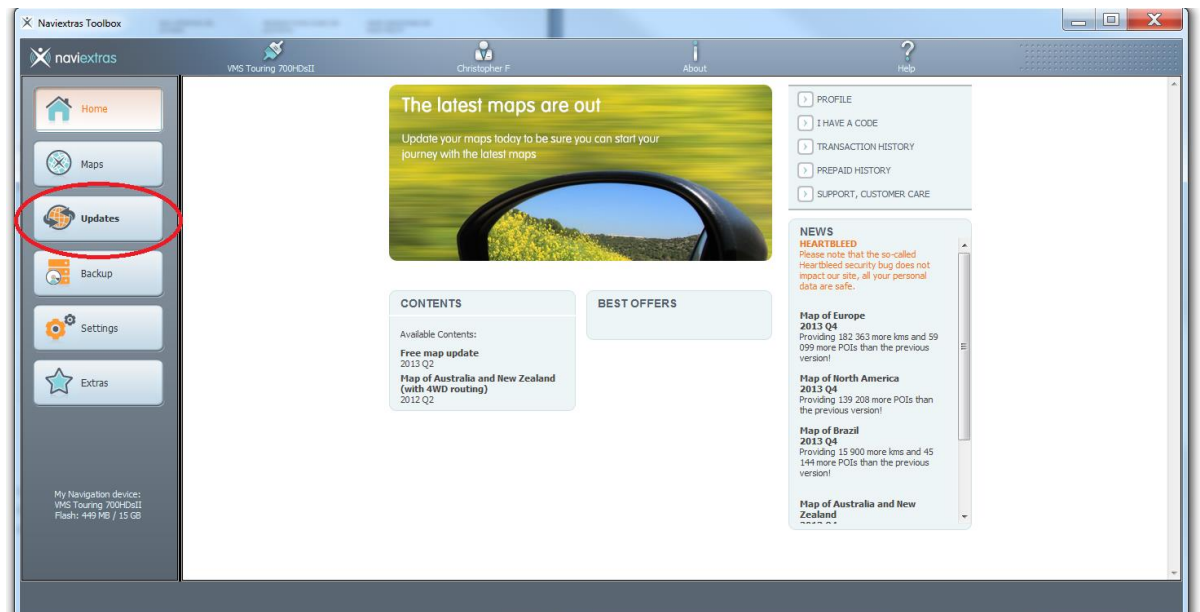
- You will need to Download PC Tool (naviextra toolbar)



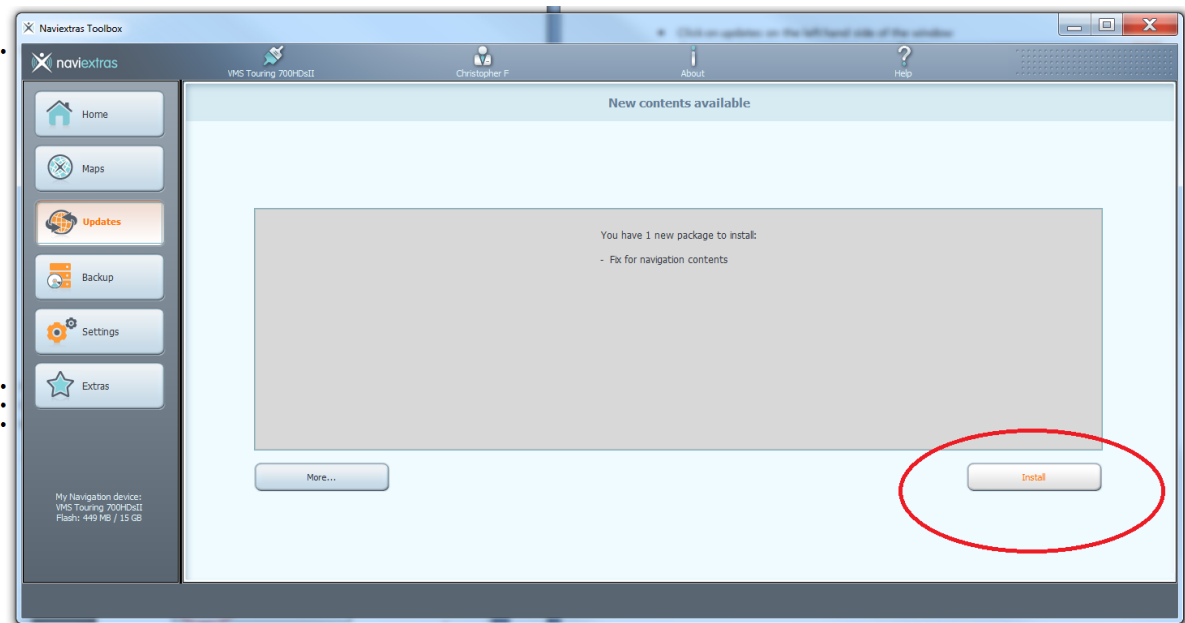
- Follow the prompts to Download (save to Desk top)
- Click on naviextra toolbox
- Make sure you back up your devise or USB card just in case an error occurs



- Log in
- Click on updates on the left hand side of the window

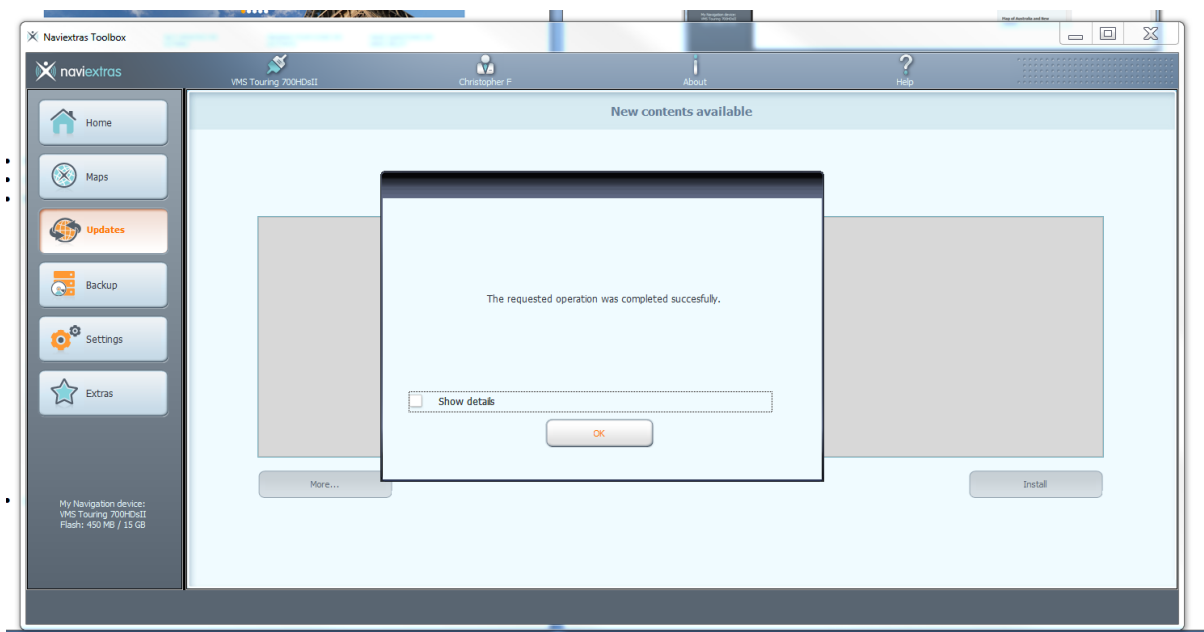


- Click install





- Your device should now be successfully updated.



- Close program and safely remove Device or USB.

